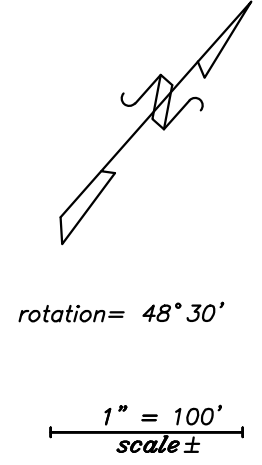
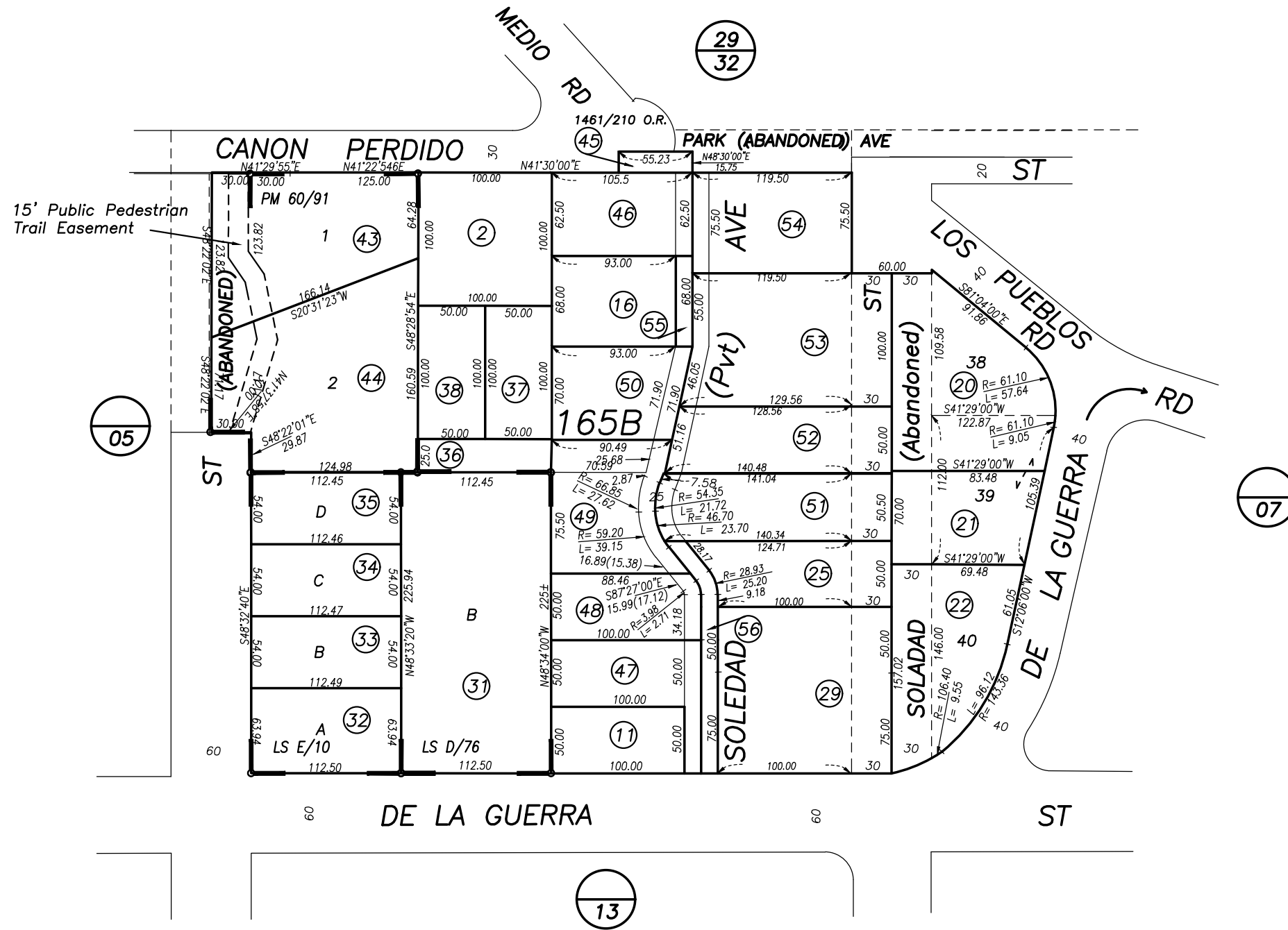


POR. PUEBLO LANDS

031-06



**NOTICE**  
Assessor Parcels are for tax assessment purposes only and do not indicate either parcel legality or a valid building site.

City of Santa Barbara  
Assessor's Map Bk, 031 -Pg, 06  
County of Santa Barbara, Calif.

03/01/1926 R.M. Bk. 15 , Pg. 99 , Tract "De La Guerra Heights"  
04/06/1887 R.M. Bk. 1 , Pg. 12 , Tract "Arata"

LD/19 show missing Pcl line on 55